



Che Suo Hui

OPENING UP WISDOM AND INSPIRING LIFE



Che Suo Hui

Vertical milling key cutting machine

Operation Instruction

CSH001Plus



The craftsman spirit never stops

CHE SUO HUI

Contents



1 Safety precautions and warnings	02
2 Product brief introduction	03
2.1 Machine description	03
2.2 Machine characteristics	03
3 Product list	04
4 Overview	05
4.1 Machine structure	05
4.2 Machine specification parameter	06
4.3 Fixture structure	08
5 Main parts and function description	10
5.1 How to use operation handle	10
5.2 How to install milling cutter and probe	11
5.3 How to adjust probe	11
5.4 How to adjust handrail	12
5.5 LED electronical calibration operation	13
5.6 Milling path for external milling keys	14
5.7 Milling path for internal milling keys	15
6 How to clamp keys	16
7 Maintenance	24
8 Maintenance services and regulations	24

1. Safety Precautions and Warnings

To avoid personal and financial loss or machine damage, please read this manual carefully before using the machine and comply with the following safety precautions:

- Please use the machine in a safe environment
- Please place the machine on a stable and solid horizontal load-bearing workbench
- Do not expose the machine or place the machine in a humid, greasy, dusty or other harsh environment
- Please keep the machine surface dry and clean. Do not place any objects on the machine
- Keep the machine out of reach of children
- Please wear ANSI standard safety goggles when use the machine
- When the machine is working, do not get close to the machine working area
- When the machine is working, there should be a special person to monitor the real-time operation of the machine. Do not stay away from the machine
- When the machine is not used for a long time or in repair, please shut off the power supply
- In case of abnormal situation, please shut off the power supply immediately

2. Product introduction

2.1 Machine Description

Dear customers:

Thank you for purchasing and using CSH-001PLUS Vertical milling key cutting machine. This product will improve your work efficiency and bring great convenience to your work. In order to avoid injury and property loss to users, the product instruction describes the correct and safe operation methods and other important contents. Please keep the instructions safe for future reference. This manual contains the precautions for using the machine. Please read this manual carefully before using it so that you can use the machine correctly.

2.2 Machine Characteristics

- Ergonomic design, top-level elegant
- Lock blocks combined multifunctional fixture, high quality and favorable price
- Support laser keys, flat keys, dimple keys etc.
- High strength all aluminum machine body
- High precision cross guide rail
- High sensitivity and easy control of sliding working table
- LED electronics calibration
- The probe shaft and milling cutter shaft are made of high speed steel

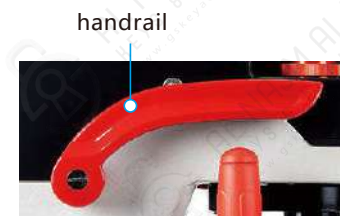
3. Product List

CSH001Plus

No.	picture	description	No.	picture	description
1		key cutting machine 1 pcs	6		power plug 1 pcs
2		1、0.56MM shim 2 pcs 2、0.86MM shim 2 pcs	7		Tungsten steel alloy milling cutter 3 pcs
3		brush 1 pcs	8		T-bar wrench 1 pcs
4		positioning stopper 1 pcs	9		1、1.0-1.5 double head probe 1 pcs 2、2.0-2.5 double head probe 1 pcs 3、3.0-90° tapered double head probe for dimple keys 1 pcs 4、12.9 grade JIMI screw 2 pcs
5		1、flat milling lock block 4 pcs 2、vertical milling lock block 4 pcs	10		plexiglass protect cover 1 pcs

4. Overview

4.1 Machine structure



4.2 Machine structural parameters

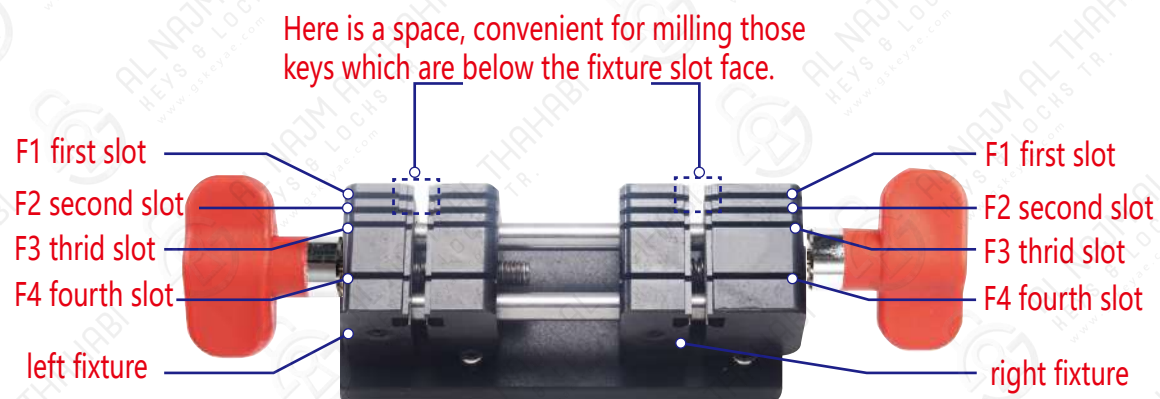
rated voltage	220V/50HZ
dimensions	30*40*43CM
net weight	25.8KG
motor power	200W
rotate speed	6000RPM
operating temperature	0-50°C
operating humidity	10-90%
moving distance in X direction	35mm
moving distance in Y direction	55mm
moving distance in Z direction	25mm



4.3 Fixture structure

4.3.1、Fixture

This is a multifunctional combination of fixture and has applied for a number of national patents. It is with atmosphere, beautiful, simple and multifunctional characteristics, very favored by the majority of locksmith friends.



There are four positioning slots in the fixture, which are F1,F2,F3,F4. Insert stopper in slots to fix the position of the key or key blanks. Select different slots and lock blocks according to different keys. Insert the original key in the left fixture, and insert the corresponding key blank to be cut in the right fixture.

4.3.2、Lock blocks



The lock blocks used with the fixture are A1,A2,B1,B2,(tip: A1+A2 lock block combination is for processing automotive vertical milling keys, residential vertical milling keys, dimple keys; B1+B2 lock block combination is for processing automotive external milling keys) The use method of lock blocks is detailed in the following.

4.3.3、Shim



Specification: 0.56mm,0.86mm

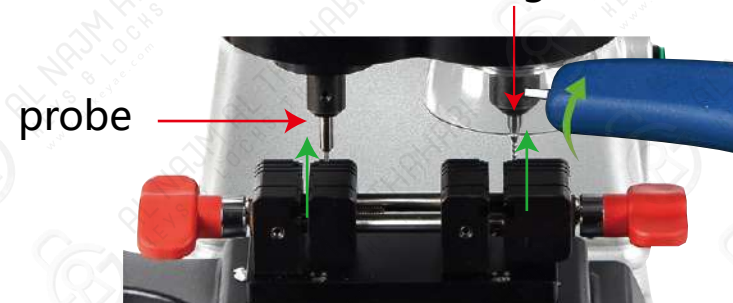
Some special keys require the use of shim, which are described in detail in the following

5. Main parts and function description

5.1 How to use operation handle



5.2 How to install milling cutter and probe



5.3 How to adjust probe

- 1、 Use adjustment knob of probe adjust the probe height
- 2、 Use elastic adjustment knob control whether the probe has elasticity (for punching)



5.4 How to adjust handrail

- 1、 The handrail can be stopped at any angle within the dotted line
- 2、 Adjust to the appropriate angle according to your usage habits



5.5 Electronical calibration operation



- 1、 When only the left red light is on, the height of probe is higher than the height of milling cutter. Rotate the adjustment knob of probe clockwise to adjust the probe down.

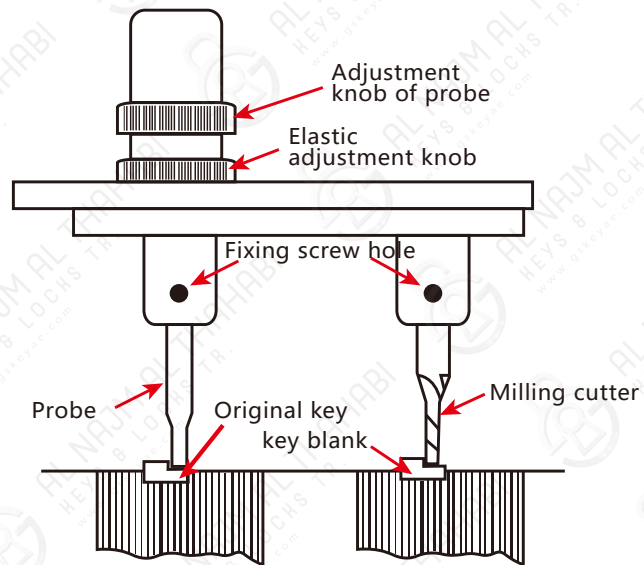


- 2、 When only the right red light is on, the height of probe is lower than the height of milling cutter. Rotate the adjustment knob of probe anti-clockwise to adjust the probe up.

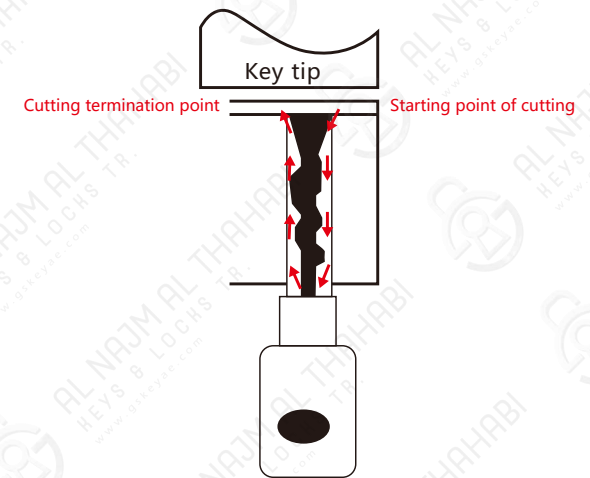
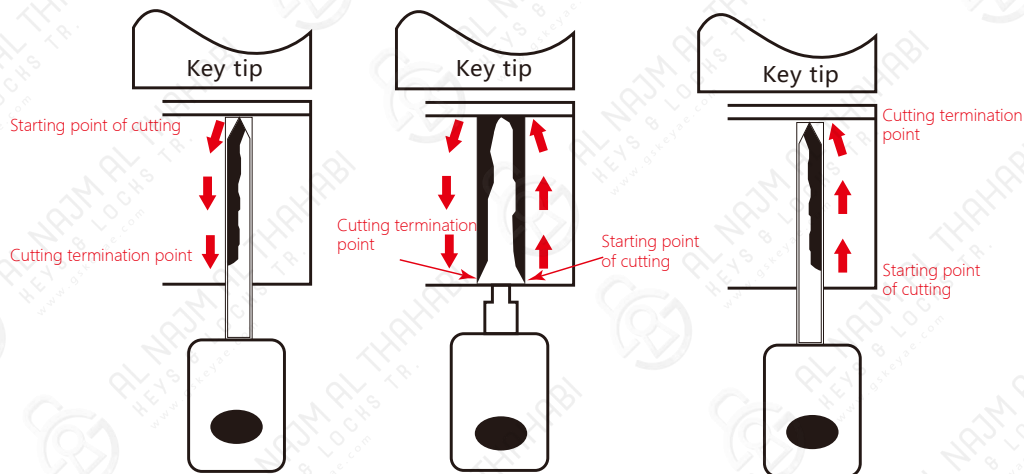
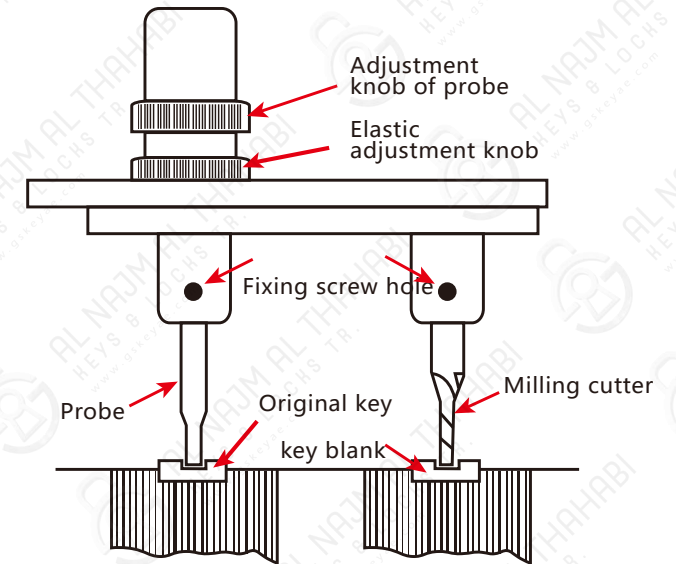


- 3、 When the middle green light is on and there is a buzzer sound, probe and milling cutter have been levelled at the same height.

5.6 Milling path for external milling keys



5.7 Milling path for internal milling keys



6. How to clamp different keys

6.1 Clamp Hyundai Kia external milling key



Clamp Hyundai Kia external milling keys with B1+B2 lock block bilateral clamping

The stopper is placed in the first slot to position key's tip

6.2 Clamp Honda key



Clamp Honda key without lock blocks, clamp it directly, and the stopper is placed in the first slot to position key's tip.

6.3 Clamp Mercedes Benz key



Clamp Mercedes-Benz key with A2 lock block to clamp one side, and the stopper is placed in the third slot to position key's tip.

6.4 Clamp Ford and Land Rover key



Clamp Ford and Land Rover keys with A1 lock blocks to clamp one side, and the stopper is placed in the third slot to position key's tip.

6.5 Clamp Volkswagen and Audi key



Clamp Volkswagen and Audi keys with A1 lock block to clamp one side, no need a stopper, to position key's shoulder

6.7 Clamp Hyundai Elantra external milling key



Clamp Hyundai Elantra external milling key with B1+B2 bilateral clamping, and the stopper is placed in the fourth slot to position key's shoulder

6.6 Clamp BMW key



Clamp BMW key with A2 lock block to clamp one side, and the stopper is placed in the second slot to position key's tip.

6.8 Clamp Wanjia dimple key



Clamp Wanjia dimple key without lock block, clamp it directly, no need stopper, to position key's shoulder

6.9 Clamp Nissan external milling key



Clamp Nissan external milling key with B1+B2 lock blocks bilateral clamping, and the stopper is placed in the first slot to position key's tip

6.11 Clamp Jindian Yuanzi dimple key



Clamp Jindian Yuanzi dimple key with A1+A2 lock blocks pushing to the bottom, no need stopper, to position key's shoulder, and press flat the key to clamp

6.10 Clamp Jusen external milling double blade key



Put a 0.56mm shim on the fixture first, then clamp Jusen external milling double blade key on the shim, and the stopper is placed in the first slot to position key's tip

6.12 Clamp Baodean semi-circle dimple key



Clamp Baodean semi-circle dimple key with A1+A2 lock blocks pushing to the bottom, the stopper is placed in the first slot to position key's tip, press flat the key to clamp

6.13 Clamp Jindian Yuanzi external milling blade key



Put a 0.86mm shim on the fixture first, then clamp Jindian Yuanzi external milling blade key on the shim, and the stopper is placed in the first slot to position key's tip

6.14 Clamp Toyota, BYD smart small key



Clamp Toyota, BYD smart small key without lock block, clamp it directly, the stopper is placed in the first slot to position key's tip, press flat the key to clamp (Note: No need to insert shim under key, otherwise the fixture would be easy to destroy)

6.15 Clamp Citroën and Peugeot key



Clamp Citroën and Peugeot internal milling keys with A2 lock block on one side, and the stopper is placed in the first slot to position key's tip

As shown in the pictures above, users can cut keys perfectly according to own experience of using various combinations of lock blocks

7 Maintenance services and regulations

- 1、 In order to prolong the life of the machine, please maintain the precision that the machine should be, clean it and clear the debris frequently
- 2、 Always check whether the screws and nuts in the fastening part are loose
- 3、 The rotating and sliding parts should be filled with lubricating oil frequently
- 4、 Worn parts should be replaced and adjusted in time
- 5、 Our company's parts must be used when replacing parts to avoid unnecessary damage to the machine

8 Maintenance services and regulations

- 1、 The products sold by our company are guaranteed for one year from the date of purchase (consumable materials are not covered by the warranty), and the warranty is guaranteed by the purchase certificate and warranty card
- 2、 If the damage caused by the user's improper use or force majeure circumstances such as natural disasters or beyond the warranty period, it is not covered by the warranty

