



How to install and use **CG Pro** 9S12 Programmer on Windows 7





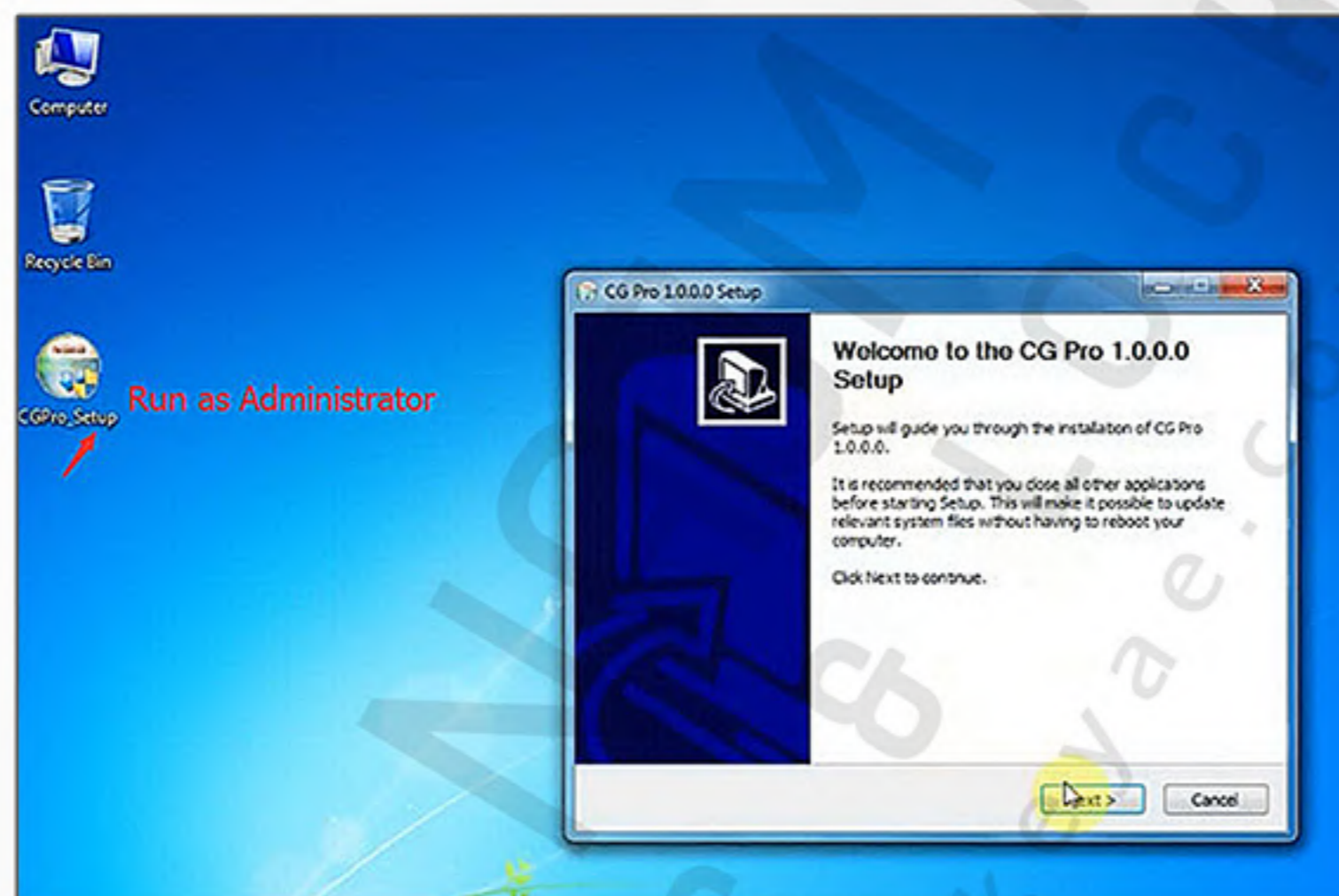
Step 1: Download Software:

Download CG Pro Software Free Here

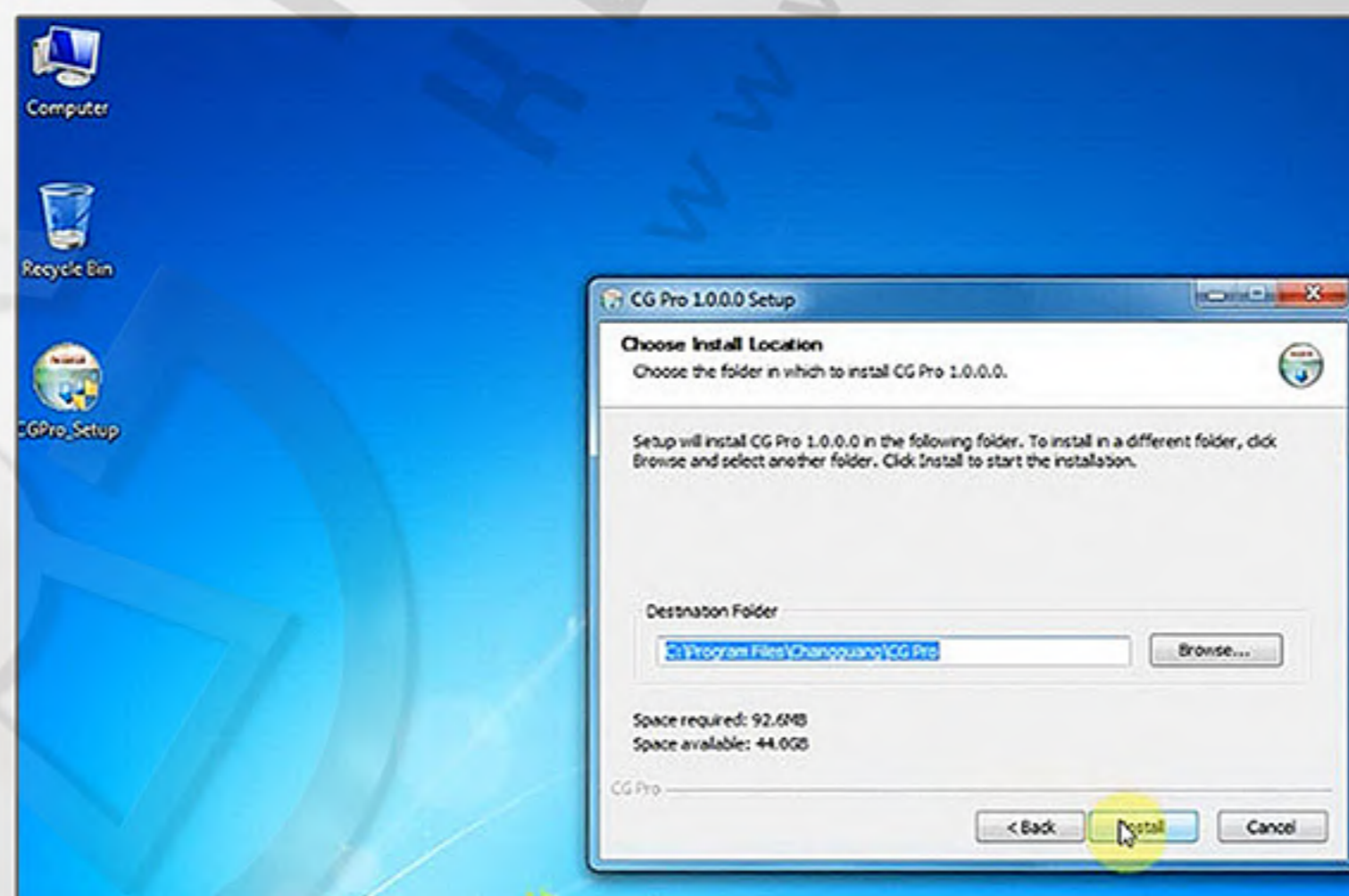
> CG-Pro 9S12	[2018-01-22]
> CGDI BMW F Series Database	[2018-01-22]
> Benz Monster	[2017-08-28]
> CG100 V3.9.6.5C	[2018-01-22]
> CGDI PROG V2.0	[2017-12-30]
> 3.95C To upgrade the firmware package	[2017-06-03]

Step 2: Install CGPro Setup:

- Run CGPro_Setup as Administrator

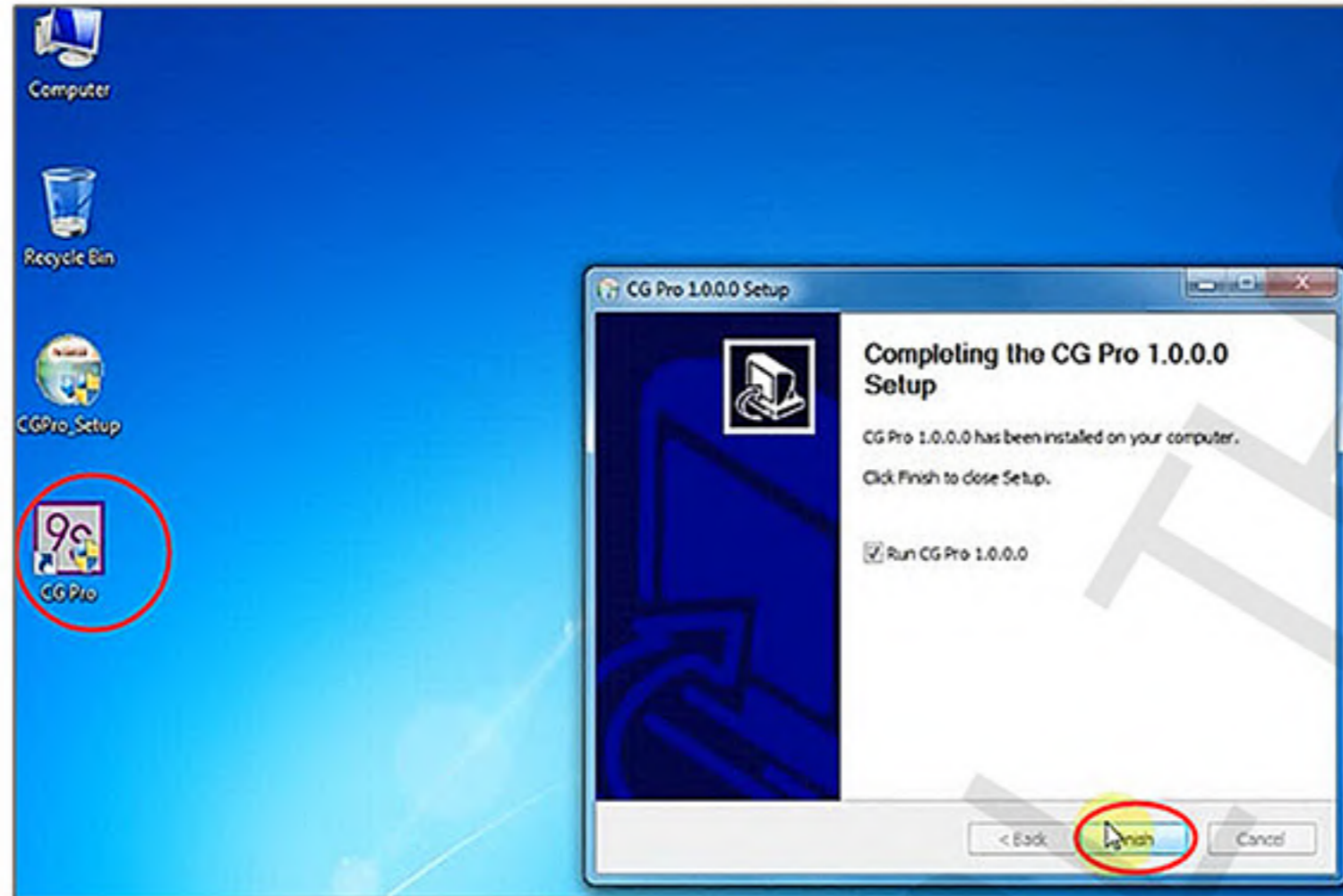


- Click Next to install CG Pro 1.0.0.0 Setup





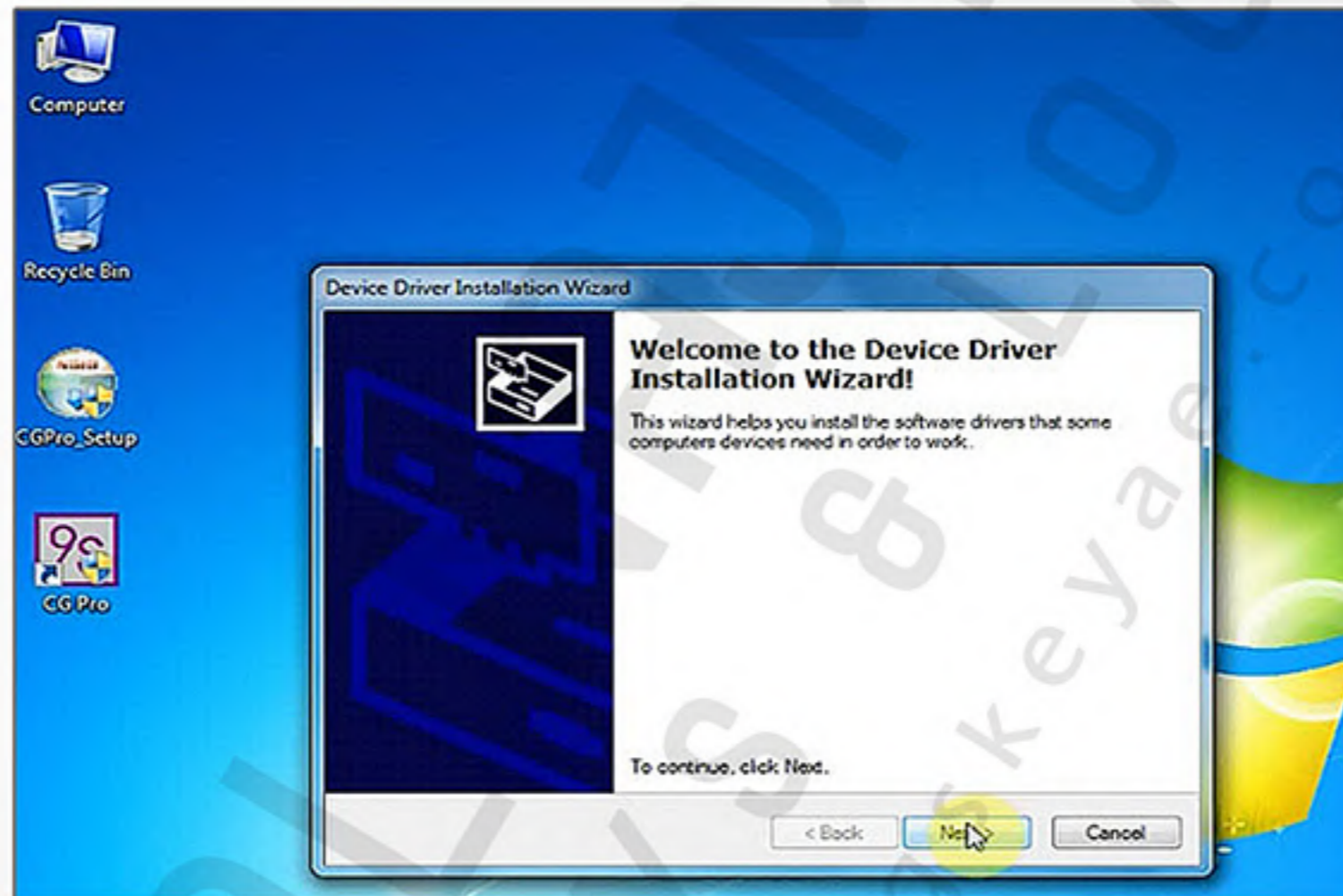
- Select destination folder: C:/Program Files/Changguang/CG Pro
- Click Install



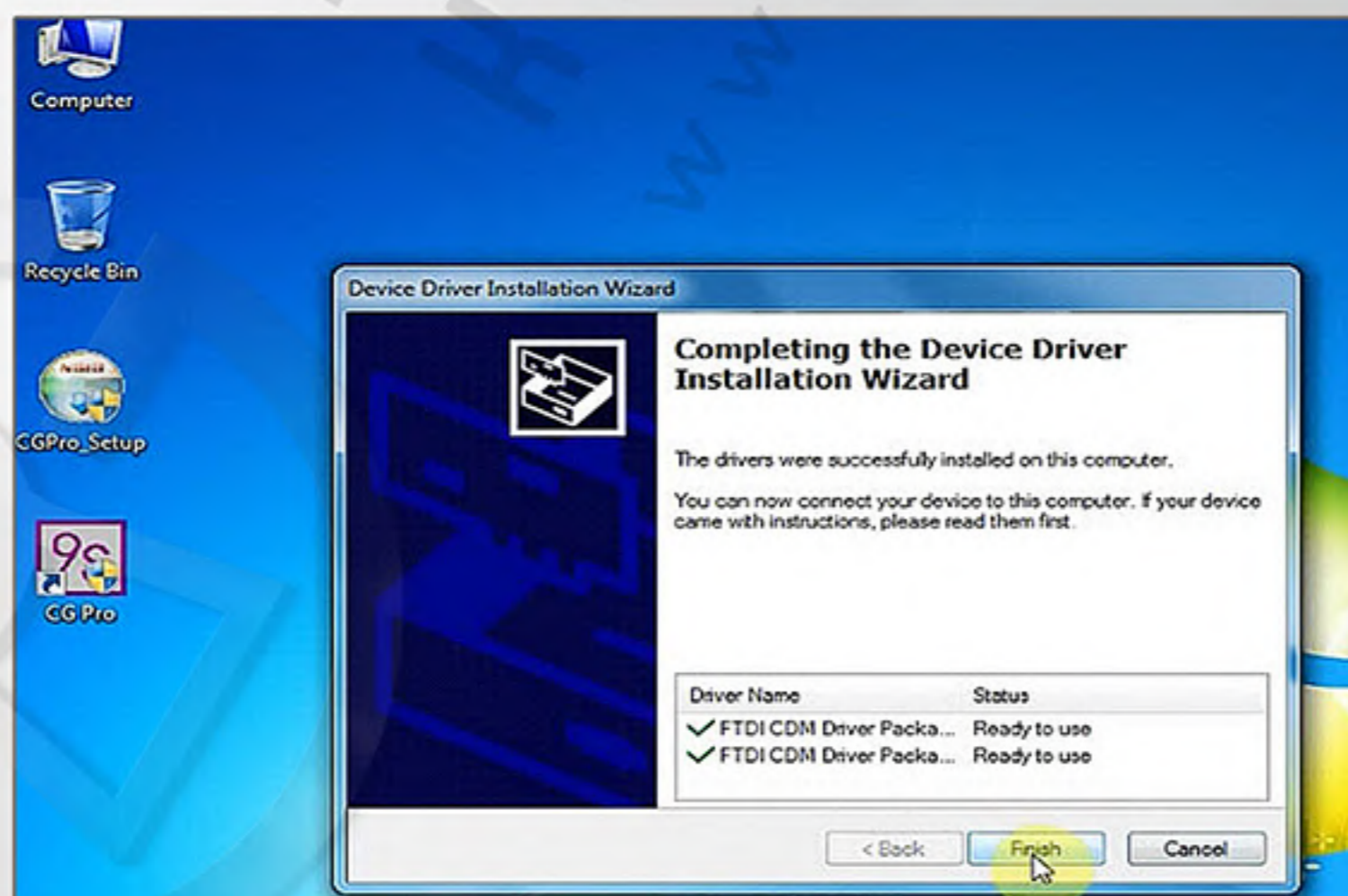
- Finish install setup
- Generate 9s CG Pro software on desktop

Step 3: Install device driver:

- Install CG Pro driver



- Click Next
- Accept license agreement



- Finish install driver



Step 4: Make connection:

Connect M35080-V adapter with CG Pro

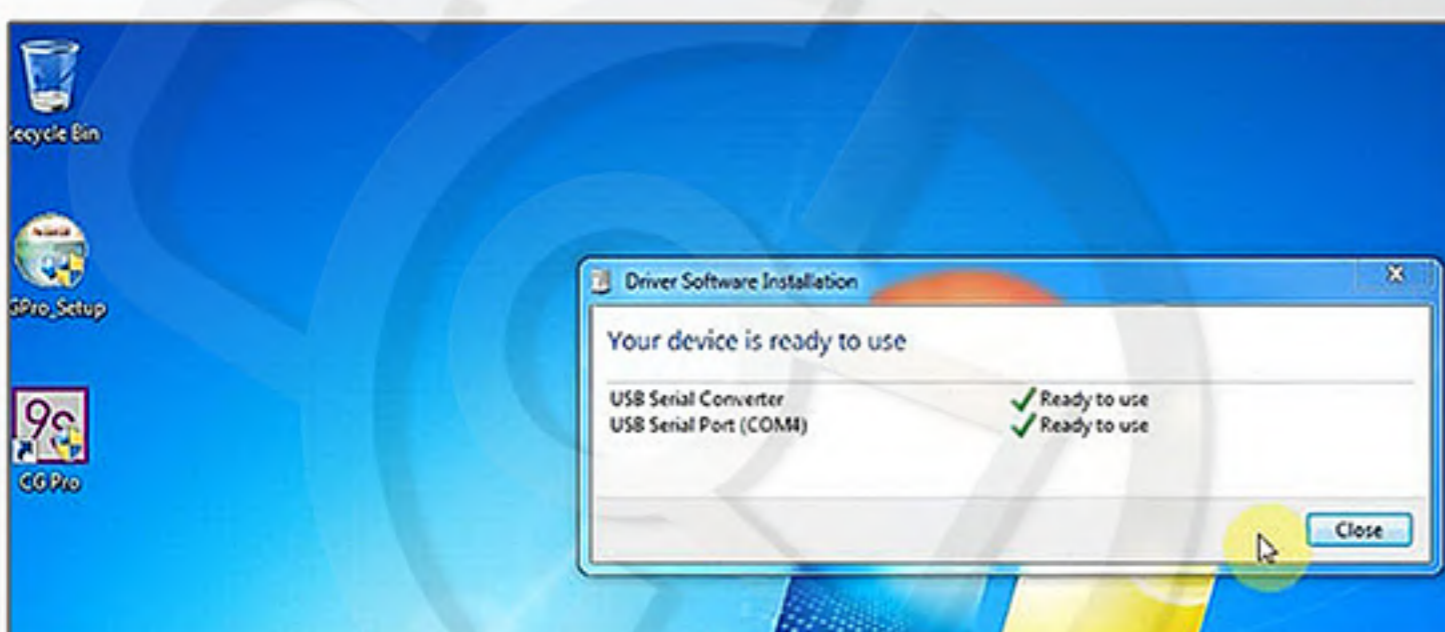
CG Pro red indicator flashes

Connect CG Pro with laptop

Connect CG-Pro with DB25 adapter



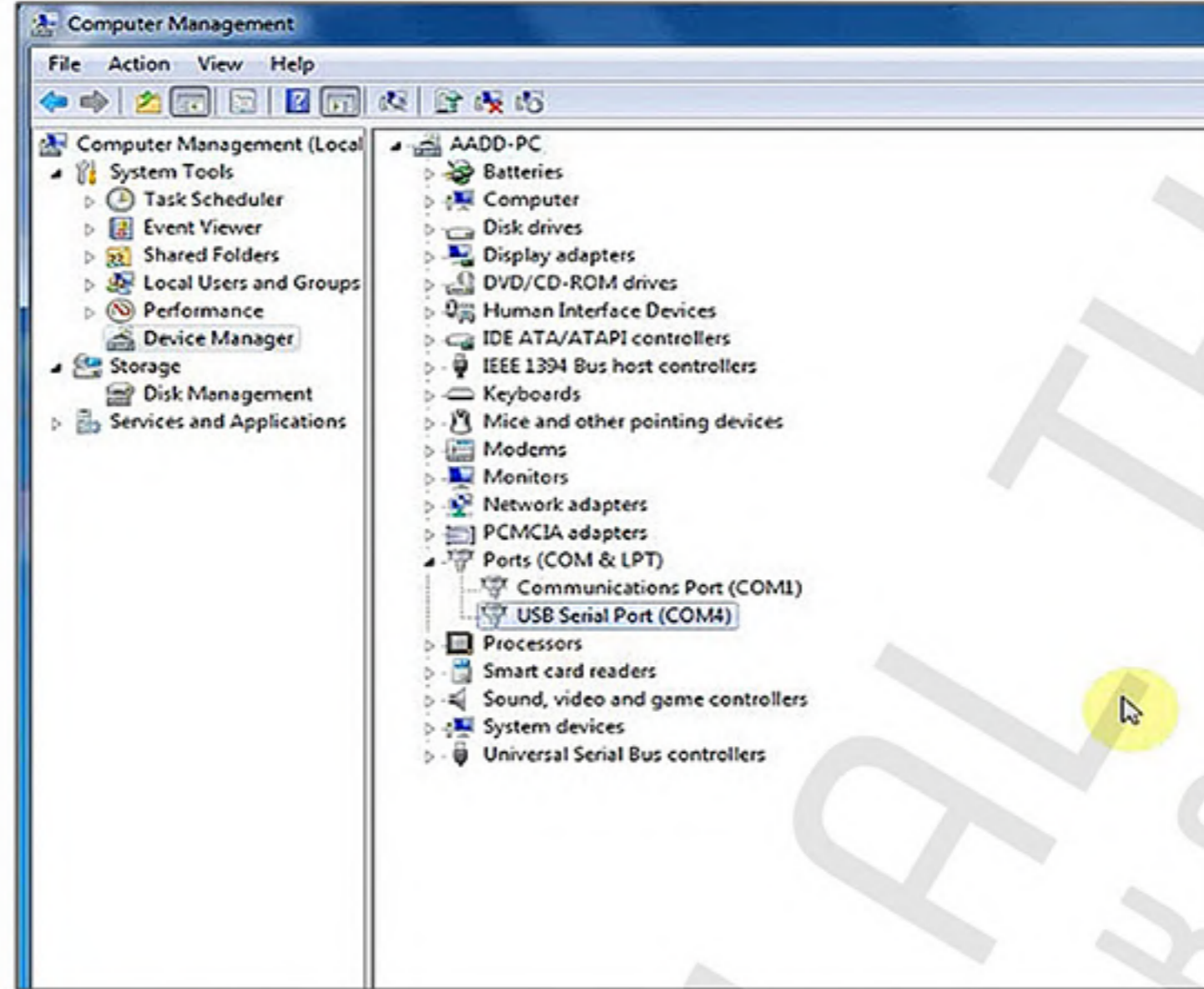
Go to CG Pro software



Driver has been successfully installed

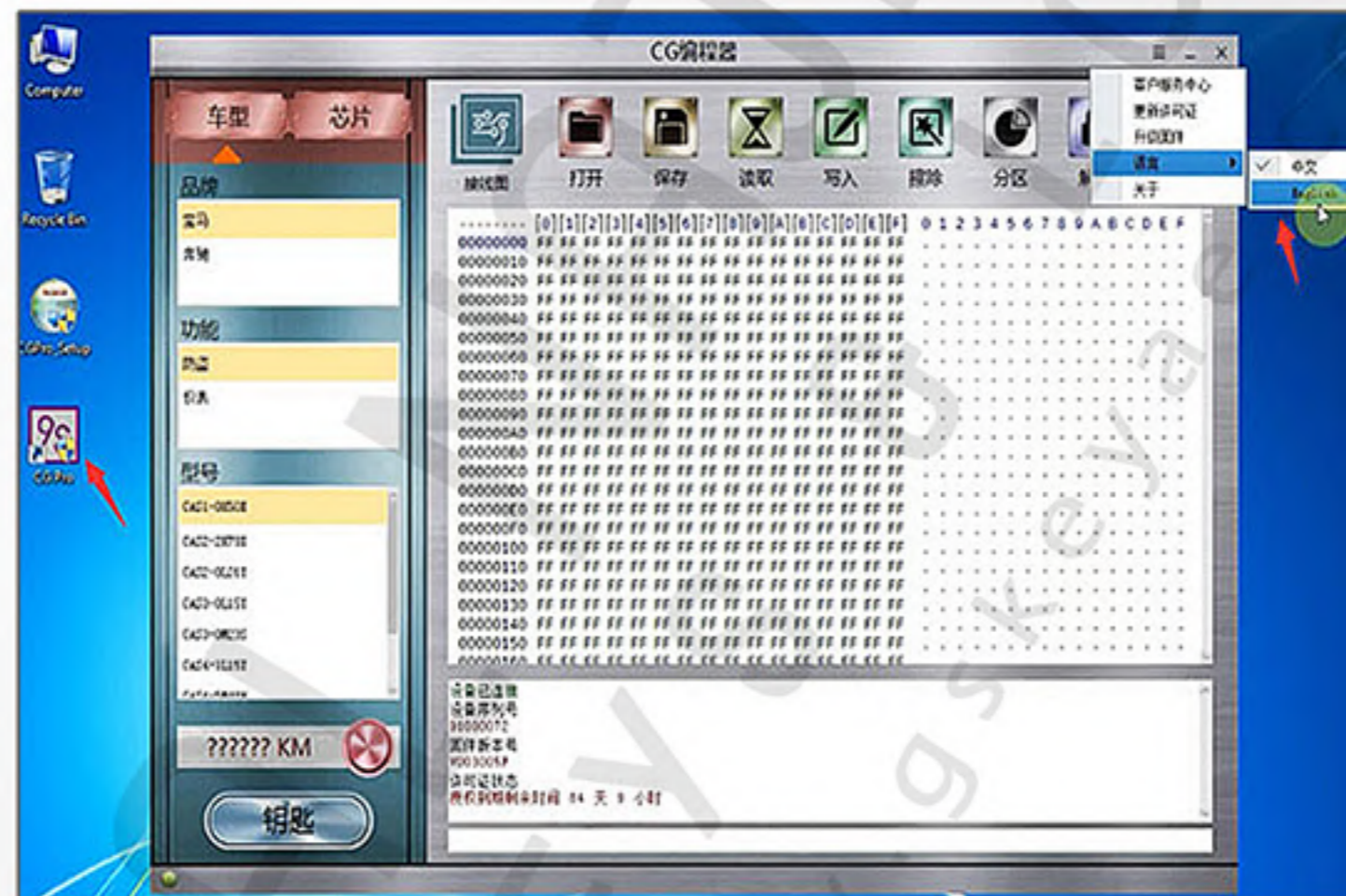


Open Computer -> Manager -> Device Manager -> Ports (COM & LPT) -> USB Serial Port (COM4)
to check well connection is built

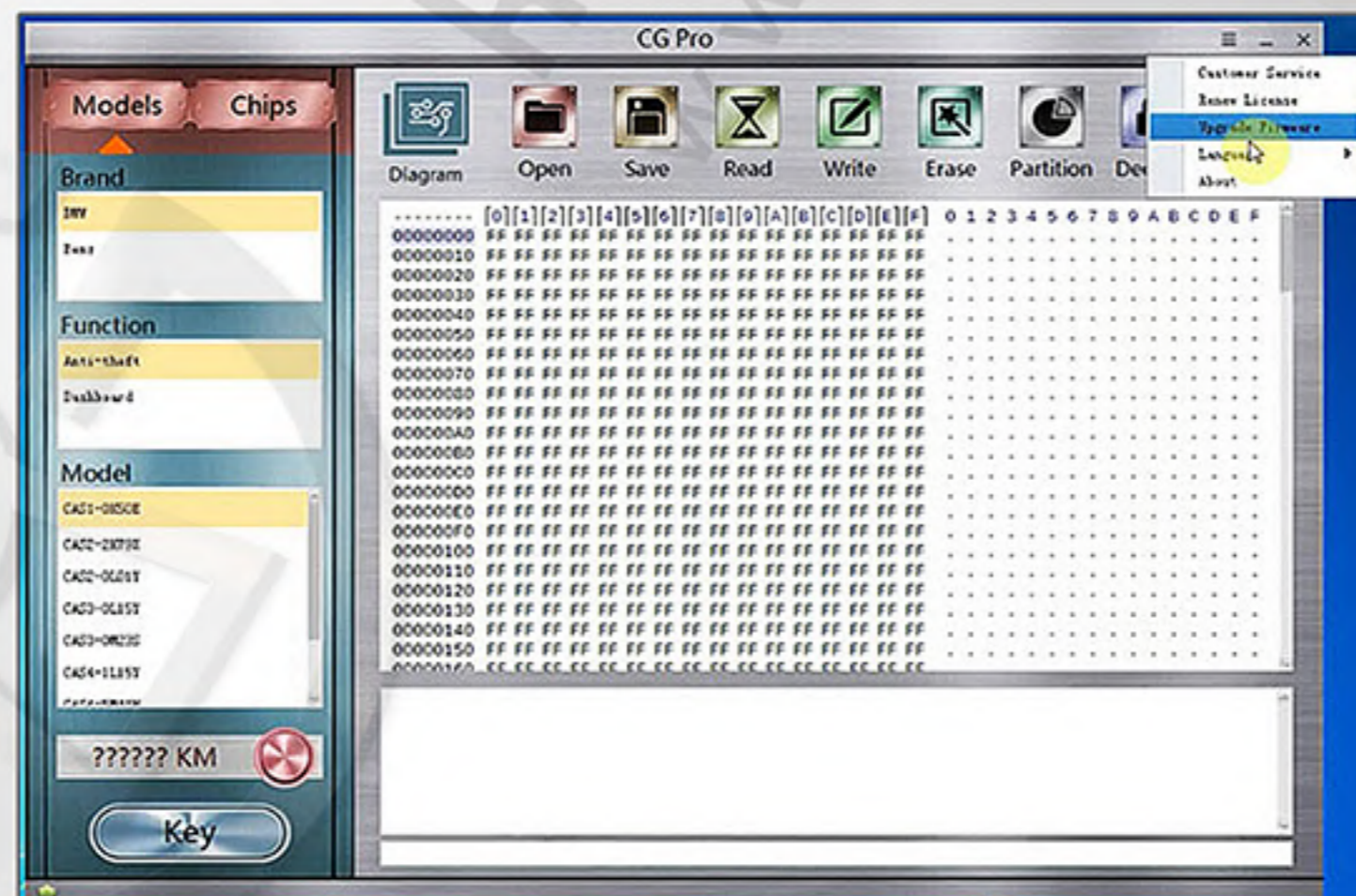


Step 5: Run CG Pro 9s12 software:

Run 9S12 CG Pro software shortcut as Administrator



Select Language: English

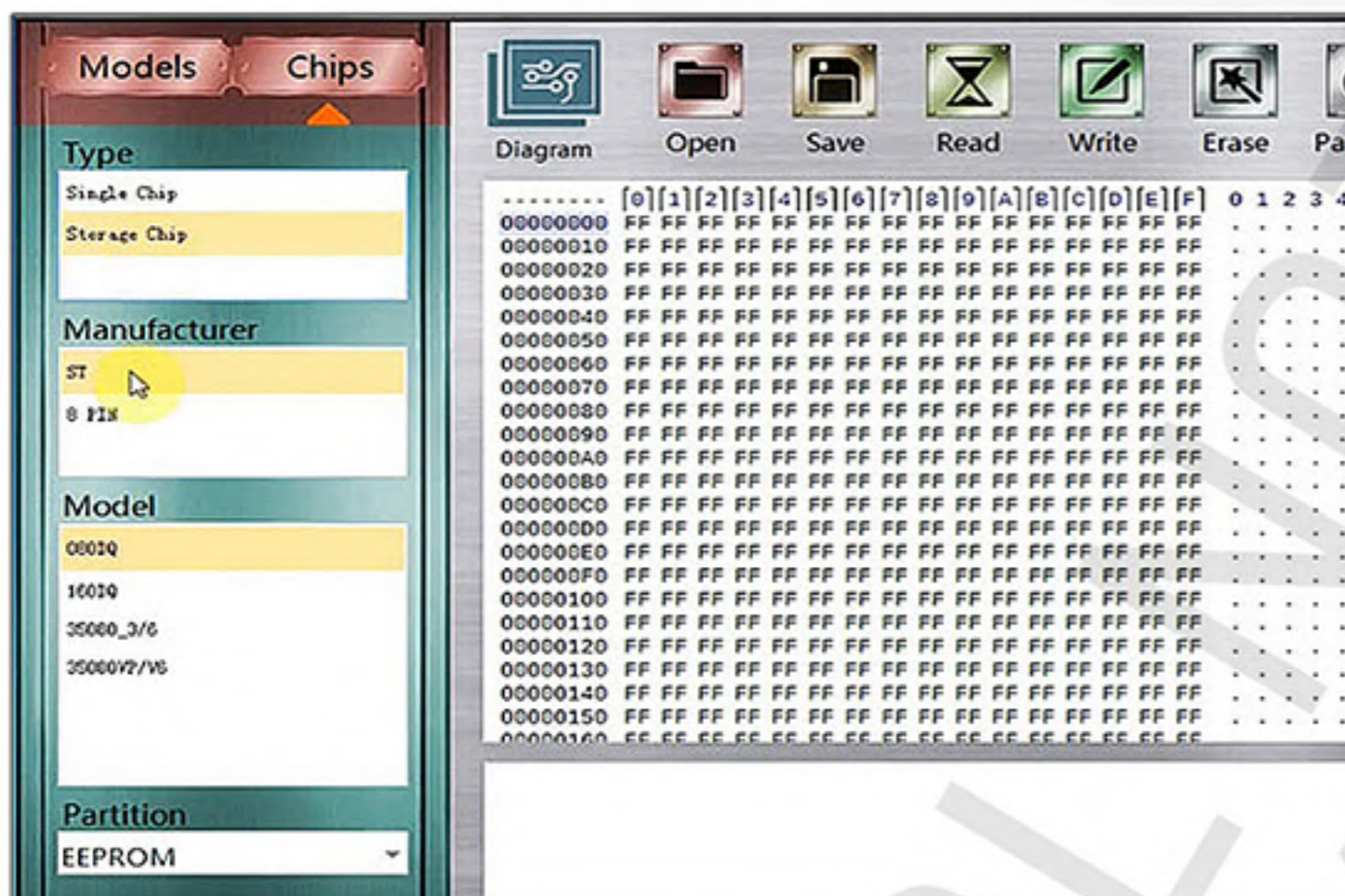
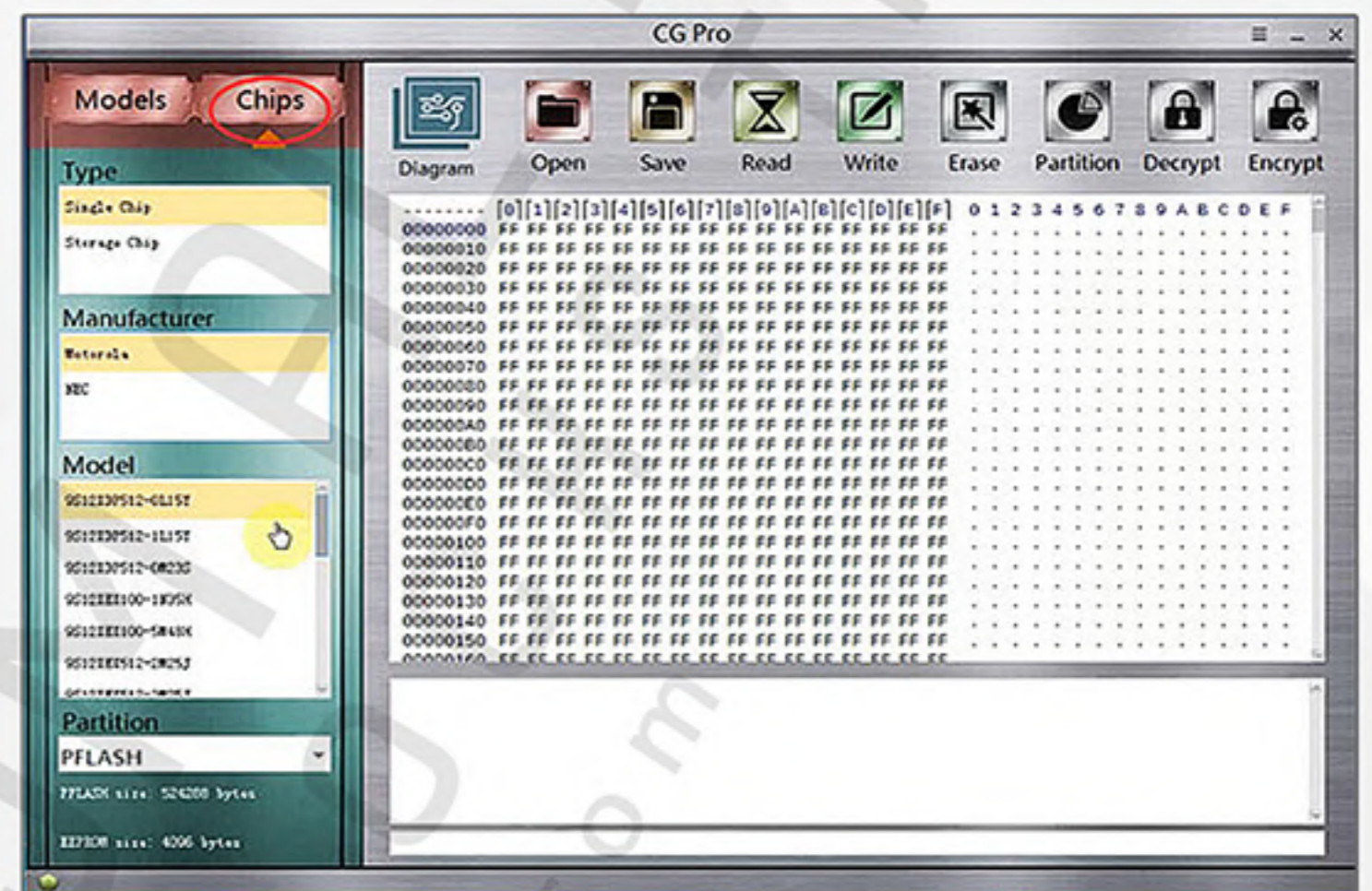
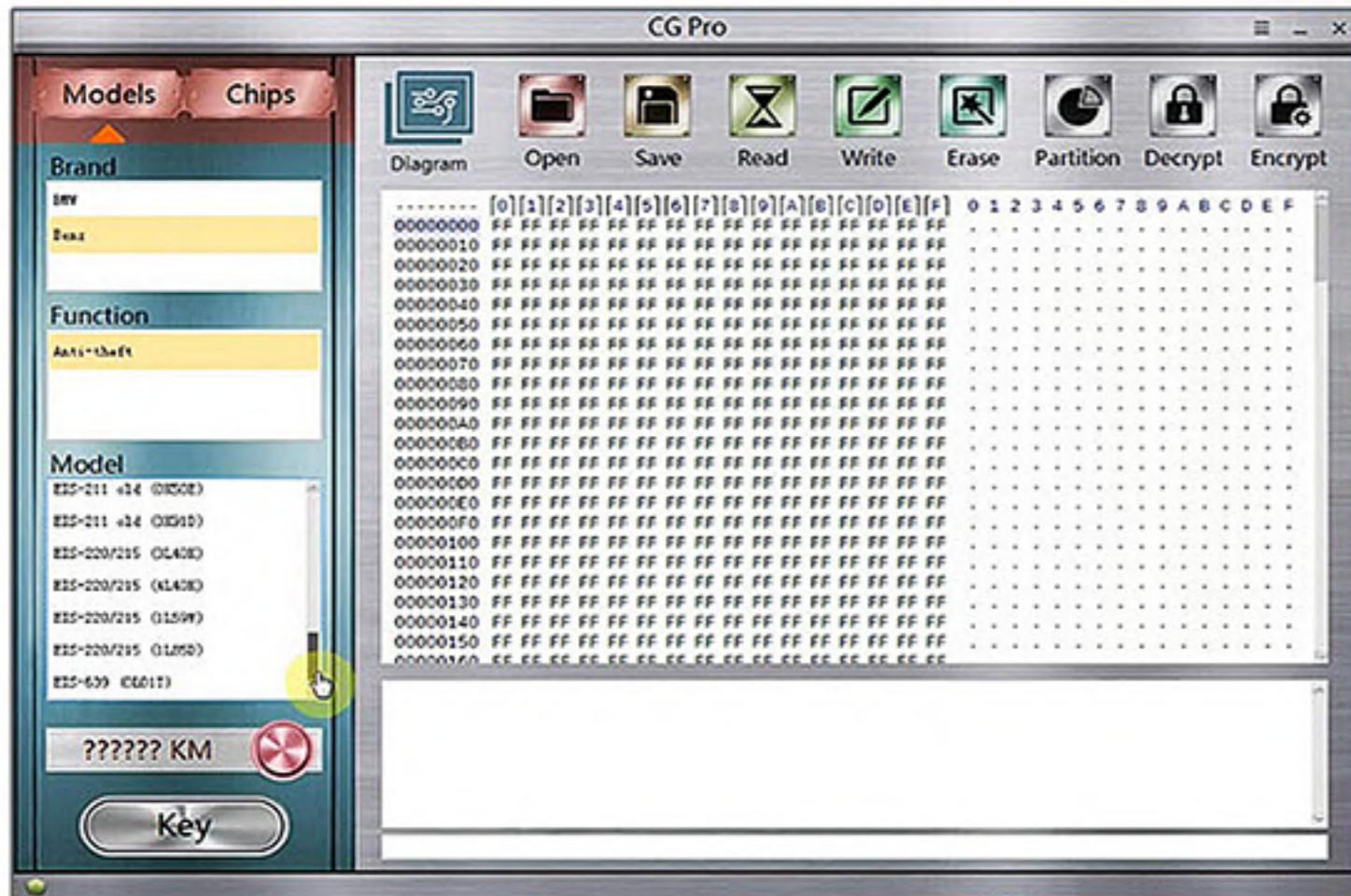




Upgrade Firmware

If it is the latest version, CG Pro will prompt (Firmware is the latest version)

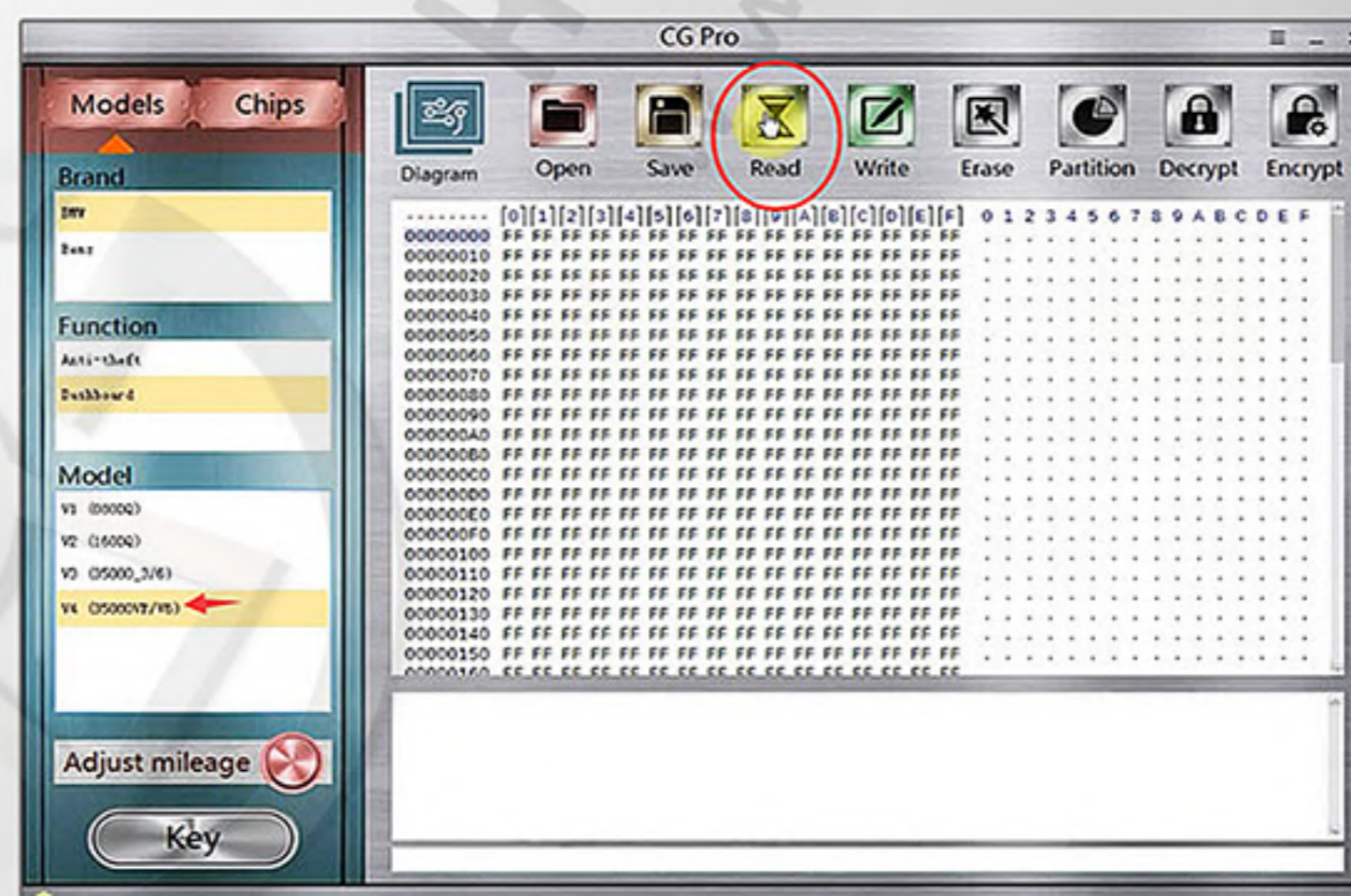
Check available Immo ECU, Dash type, Chip list



For example:

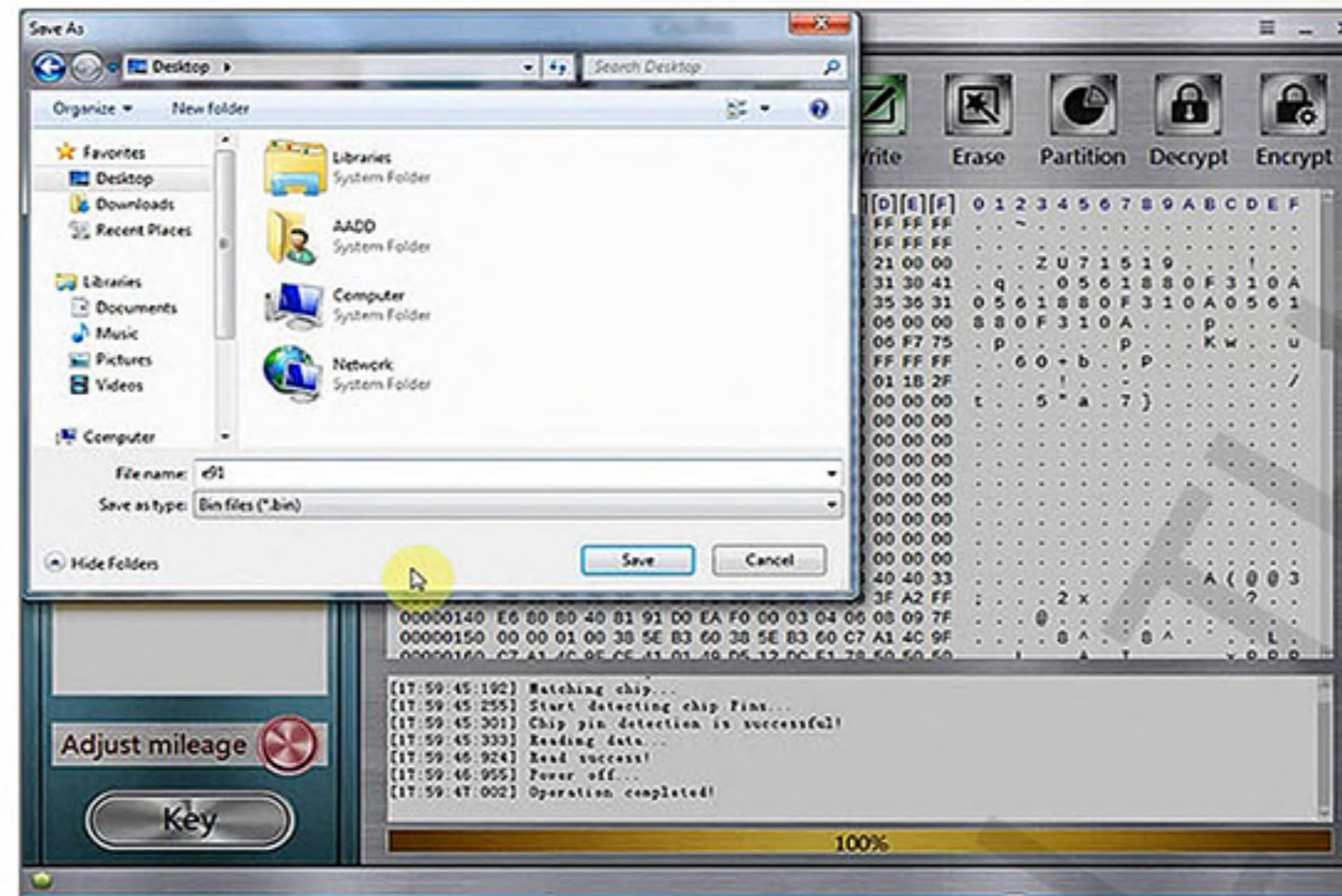
Change BMW E91 35080 VP/V6 dash mileage

Click on Read





Read and save chip data

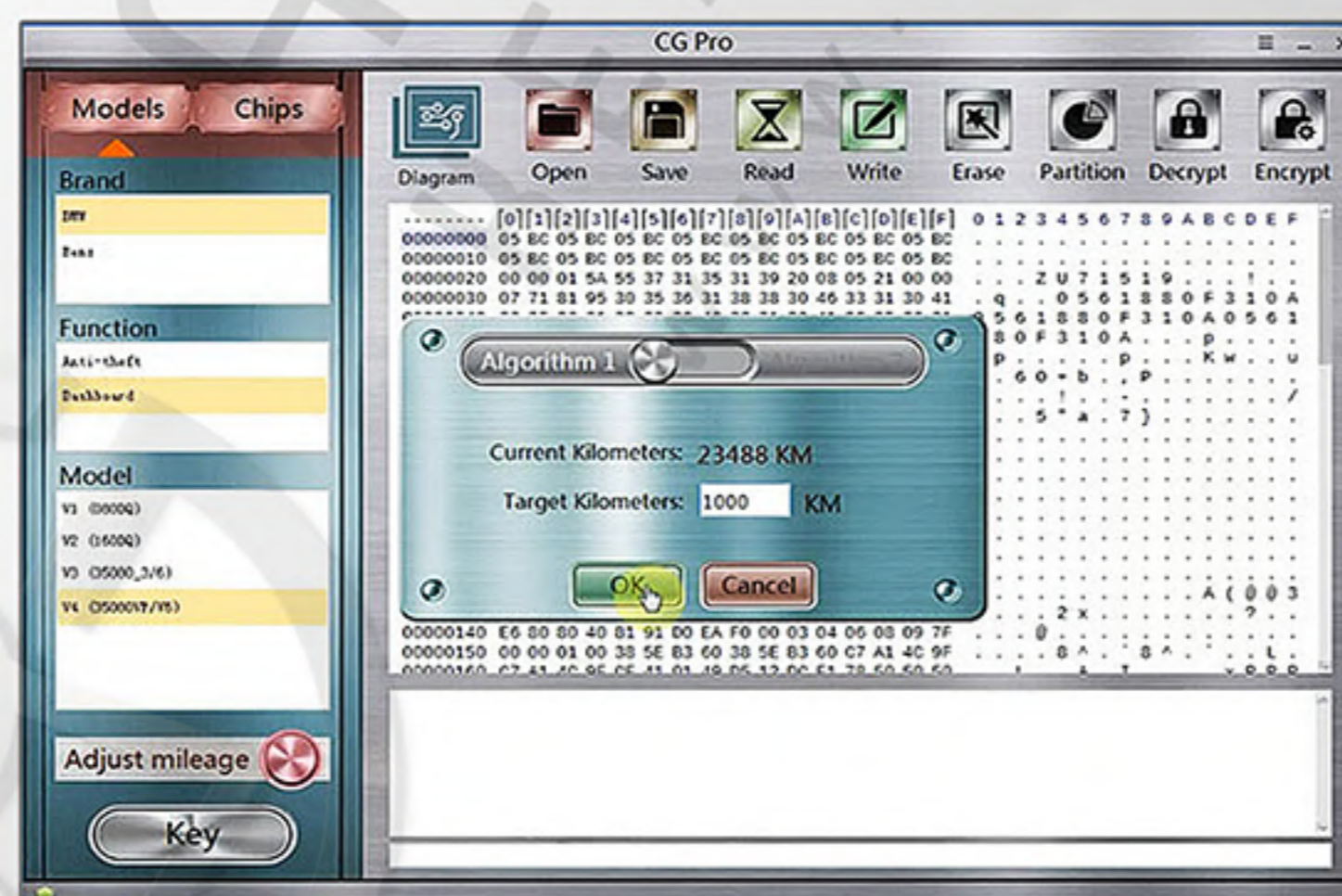


Close CG Pro software and open it again as Administrator

Click on Open and upload BMW original eeprom data



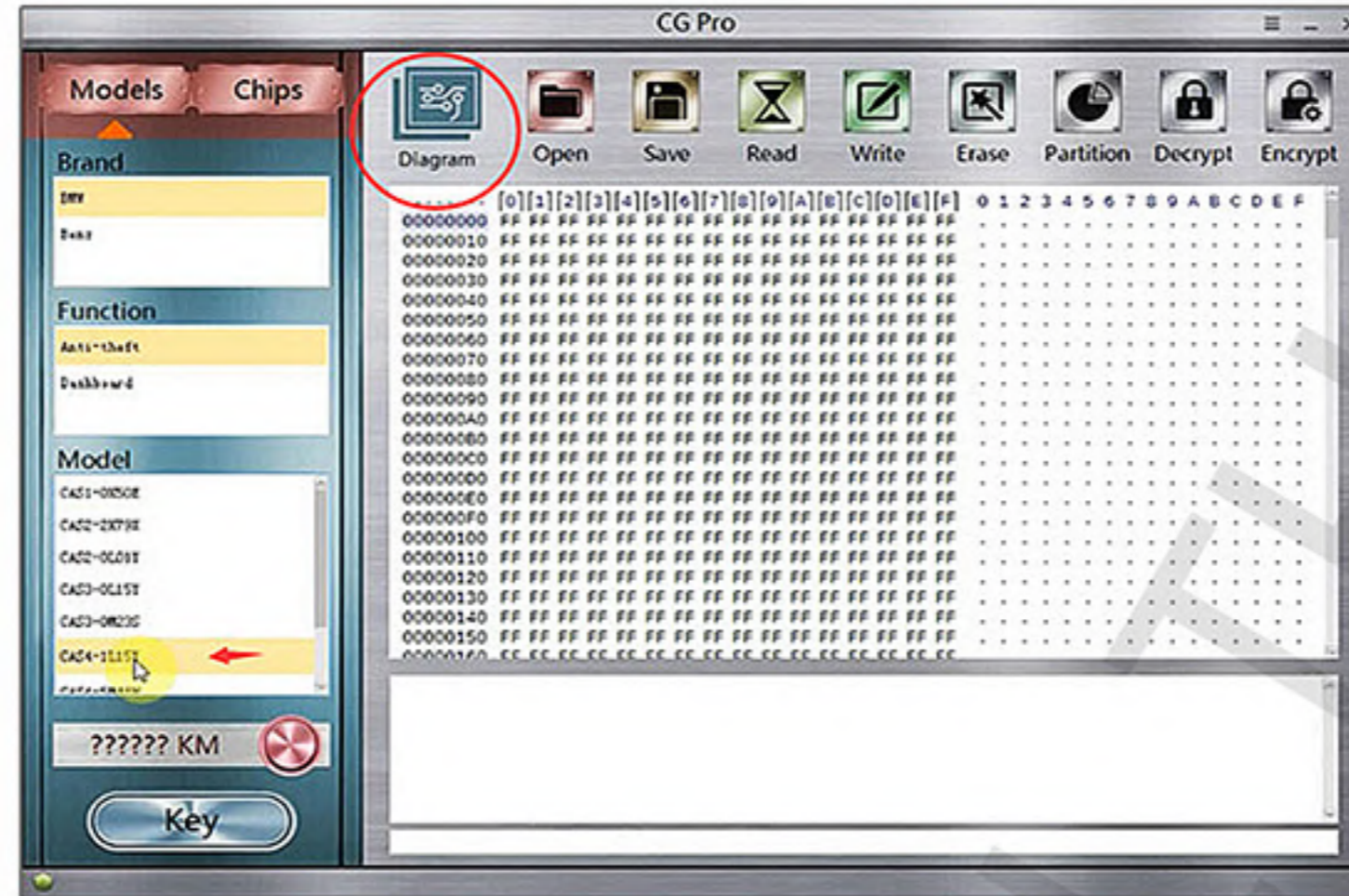
Click on Adjust mileage



Enter mileage you desired and press OK

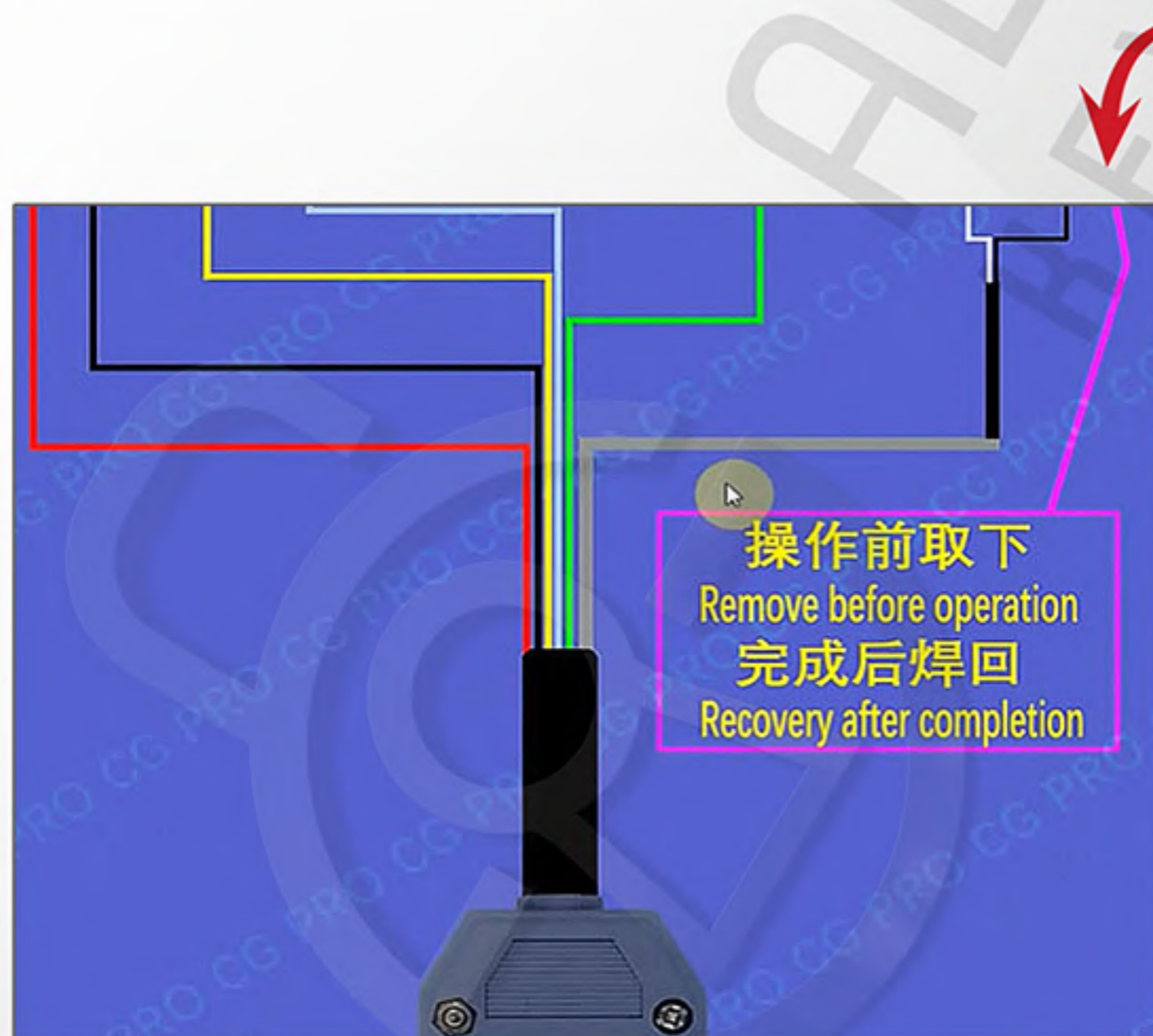
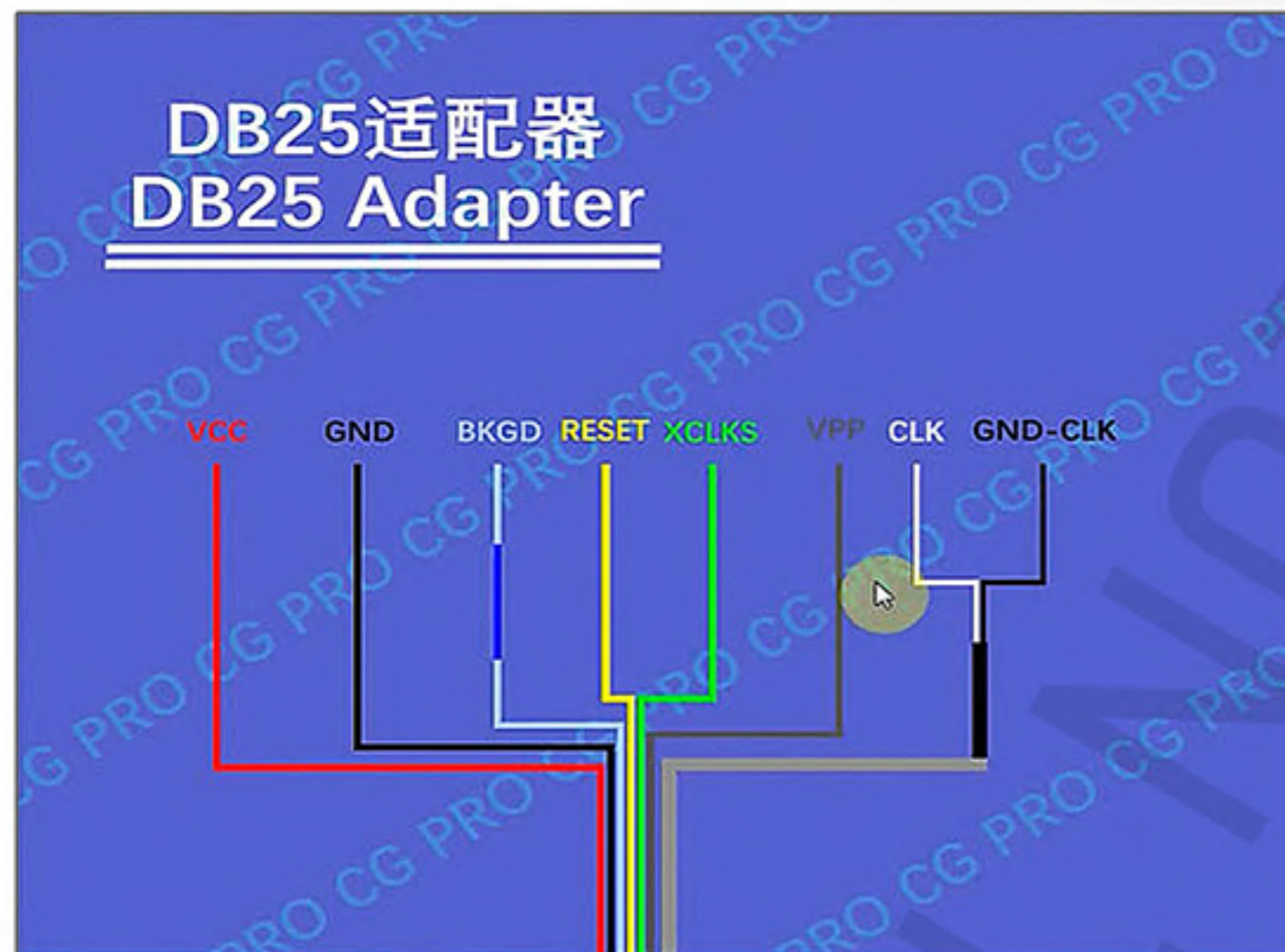


Change BMW CAS4 1L15Y mileage



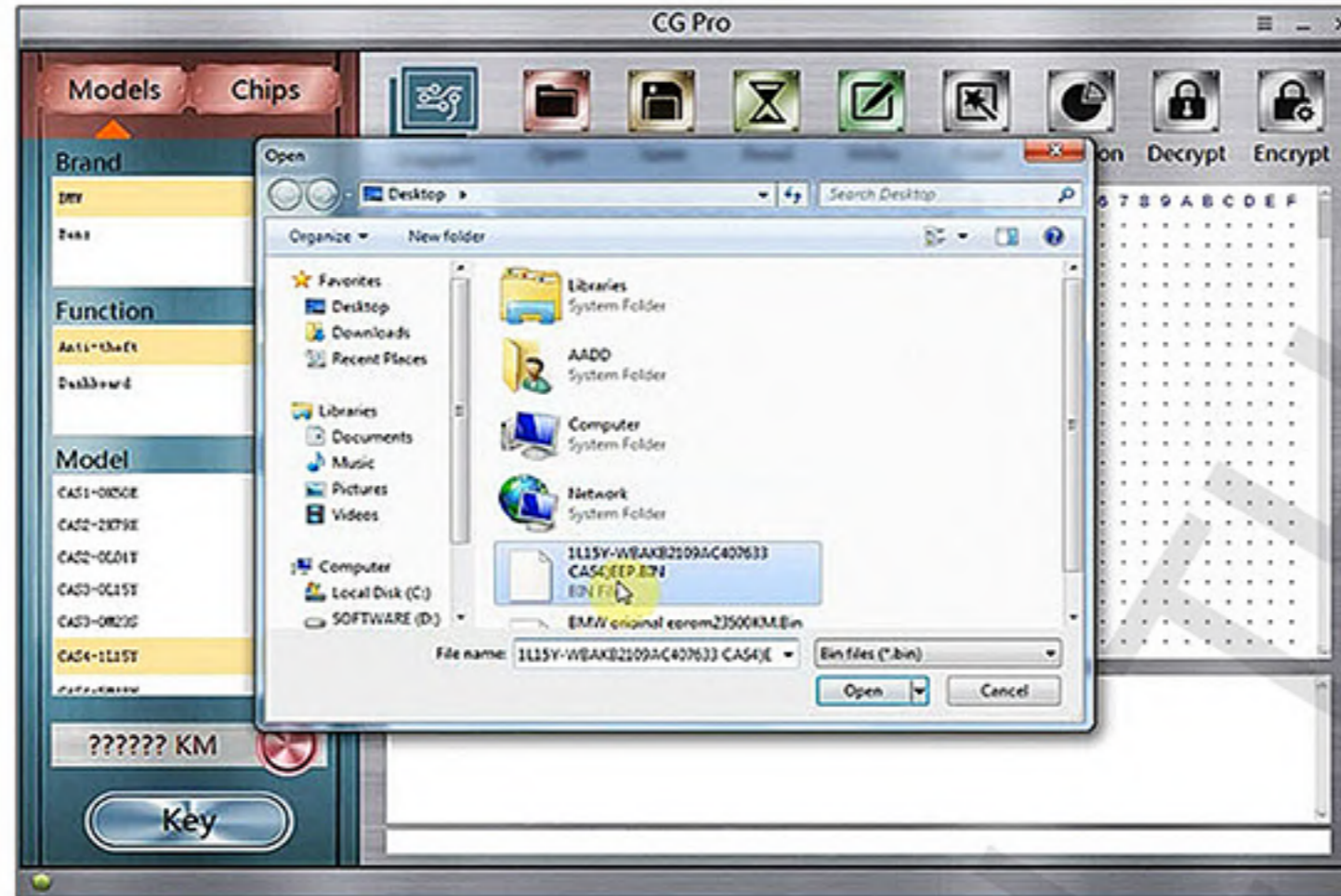
Select BMW -> Anti-Theft-> CAS4 1L15Y

Click on Diagram icon to check wiring connection of DB25 adapter and CAS





Connect adapters and CAS following the wiring



Upload BMW CAS4 1L15Y eeprom

CG Pro 9s12 programmer will show current mileage

Click on Adjust mileage icon



Enter mileage you desired and press OK to change km in CAS

You can also upload original CAS eeprom data to make key

